

# California Hemp = Agriculture



**U.K. hemp field**

# Industrial Hemp = Agriculture

“Bringing It Home” highlighted several attributes of commercial hemp farming. Some key concepts:

- Government-authorized seed stocks.
- Highly regulated (permits, potency testing).
- Maximum threshold for THC (< 0.3%).
- Growing interest in hemp-derived CBD.
- Multipurpose strains (food/fiber) boost income.
- Bulk processing/packaging plants are required.
- Phytoremediation: Restores damaged soils.

# Industrial Hemp = Industrial Products

Modern hemp manufacturing is diverse.

- ▶ Biofuel
- ▶ Fiberboard
- ▶ Automotive door panels
- ▶ Building materials (hempcrete)
- ▶ Insulation materials
- ▶ Lubricants
- ▶ Cosmetics/Soaps

# Industrial Hemp = Food Products

Food products are derived from hemp seed, which is rich in omega fatty acids.

- ▶ Hemp cereal/granola bars
- ▶ Hemp milk
- ▶ Hemp hearts (shelled seed)
- ▶ Hemp protein powders
- ▶ Hemp salad oil (low-temp; not ideal for cooking)
- ▶ Whole hemp seeds/toasted seeds
- ▶ Animal feed/bird seed

# Industrial Hemp = Fiber Products

Hemp has been prized for its strong fibers throughout recorded human history, but its modern use goes well beyond rope and sails.

- ▶ Fiberboard
- ▶ Clothing & apparel (hemp-cotton blends)
- ▶ Paper/cardboard
- ▶ Twine
- ▶ Carpets

## Industrial Hemp = Cannabidiol (CBD)

By legal definition, industrial hemp contains less than 0.3% of THC, the psychoactive compound that creates the “high” effect in marijuana. Hemp plants can contain other cannabinoids, including cannabidiol (CBD), which has medicinal properties but no psychoactive effects.

Pilot programs suggest cultivation of hemp for CBD extraction may emerge as a profitable niche market. Because “medical marijuana” is regulated under different state laws, and because California’s hemp program is in its infancy, hemp-derived CBD has not yet been addressed in state law or local regulations.

## Senate Bill 566 (2014)

The California Industrial Hemp Farming Act ...

- Conditionally permits growth and cultivation of industrial hemp in California.
- Designed to align with then-pending U.S. Farm Bill.
- Hemp Act authorizes both research and commercial cultivation, where permitted by federal law.
- Created state Industrial Hemp Advisory Board.
- Earlier versions of the Hemp Act were vetoed by Govs. Brown, Schwarzenegger.

# Seeds of Change: 2014 U.S. Farm Bill

In 2014, the U.S. Congress approved a new Farm Bill that provided for “agricultural pilot programs” for “research and development” by state agriculture departments and/or institutions of higher education.

- State must register and certify cultivation sites.
- Products may be sold for “marketing research.”
- General commercial activity prohibited.
- Interstate shipment of products prohibited.



# State Attorney General: Not So Fast

In 2014, then-Attorney General Kamala Harris issued a legal opinion regarding the implications of the 2014 Farm Bill on hemp farming in California. Keys:

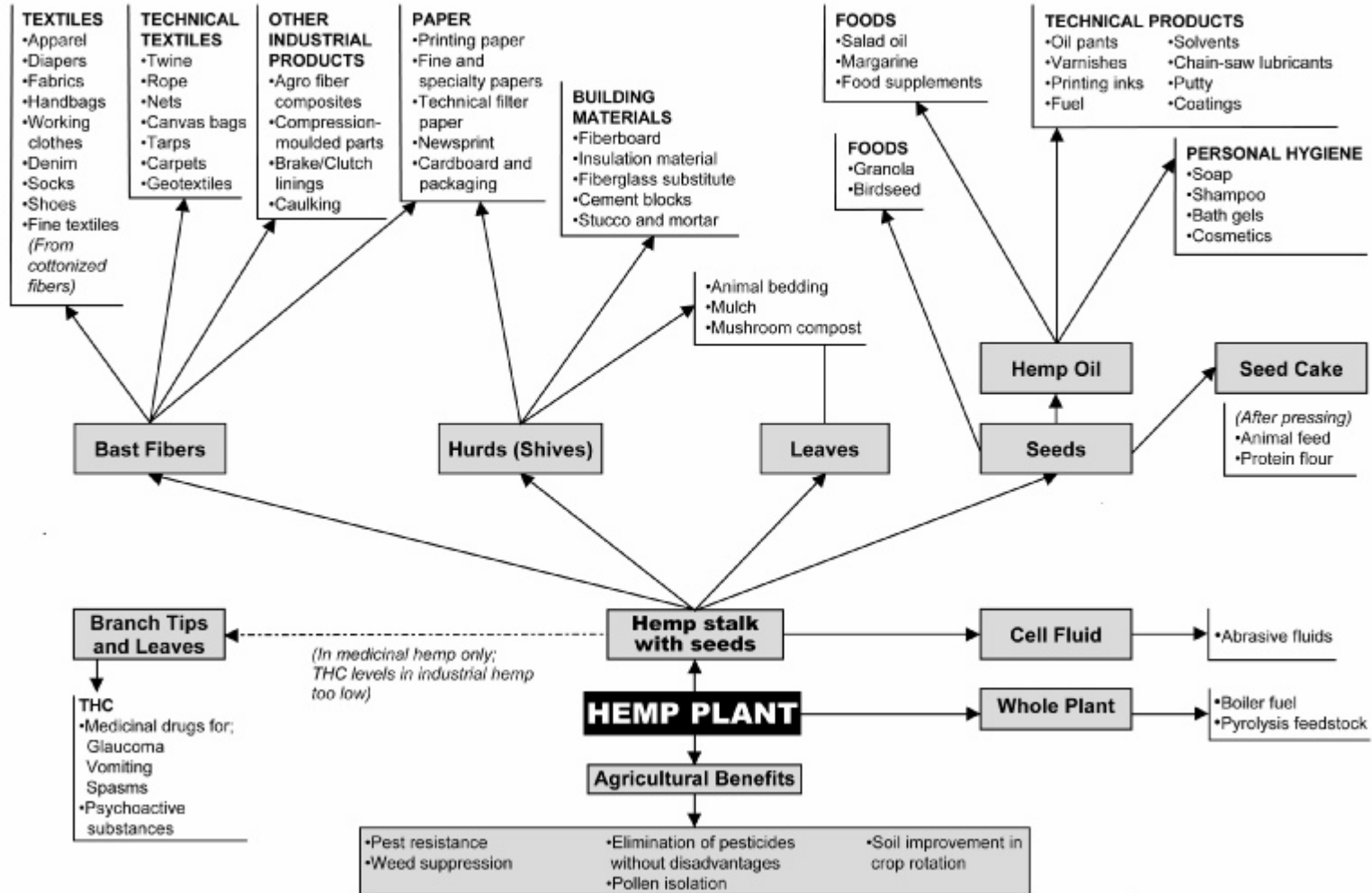
- Hemp cultivation may be done only by CDFA registrants and/or public/private “institution of higher learning,” e.g. Fresno State, UCSF Fresno.
- Any “agricultural pilot program” must conduct only “agricultural or academic research.”
- Commercial hemp cultivation still prohibited.
- Hemp advisory board provision is inoperative.

## Proposition 64

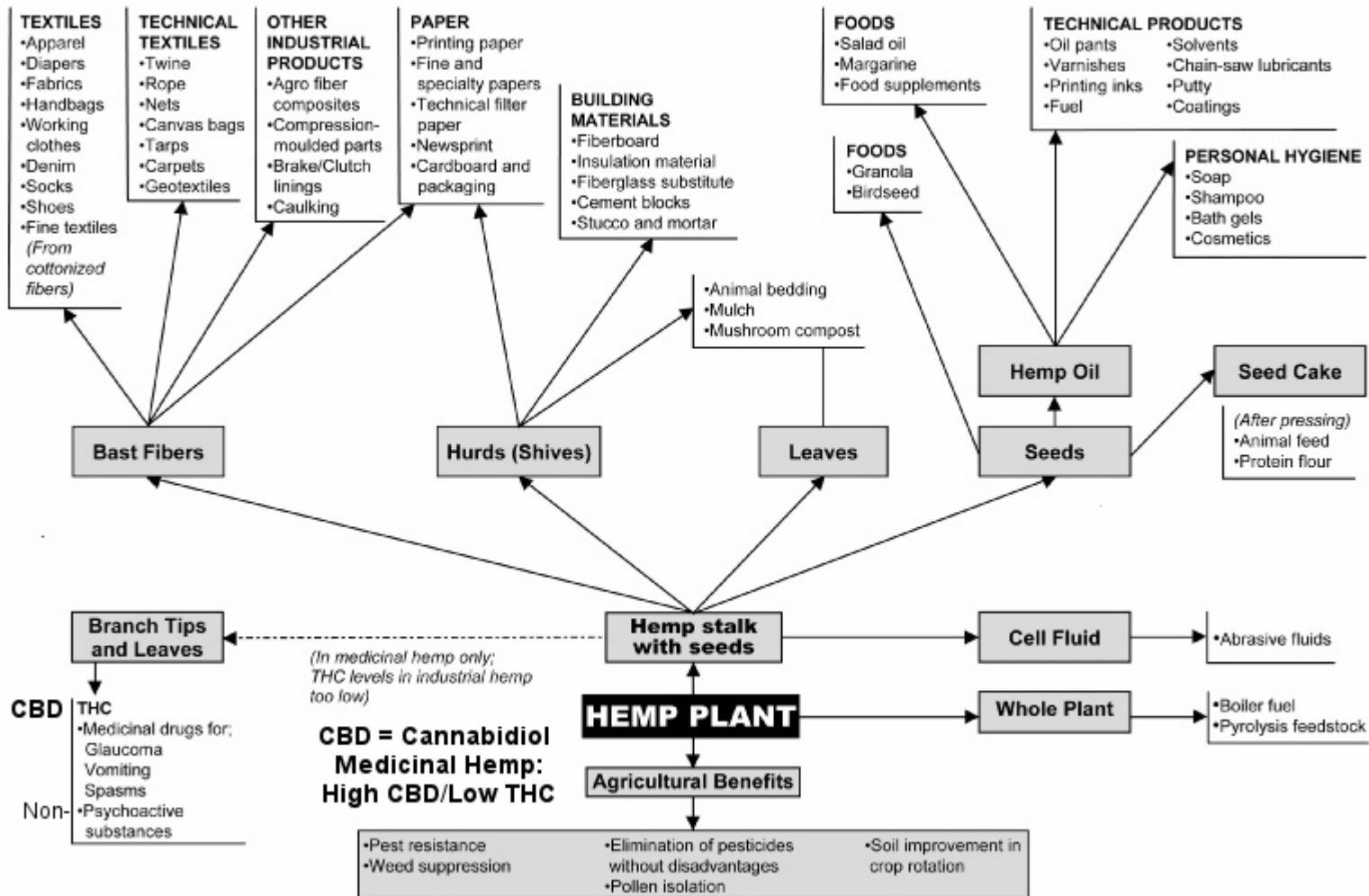
Section 9 of the voter-approved Adult Use of Marijuana Act (AUMA/Prop. 64) rebooted hemp.

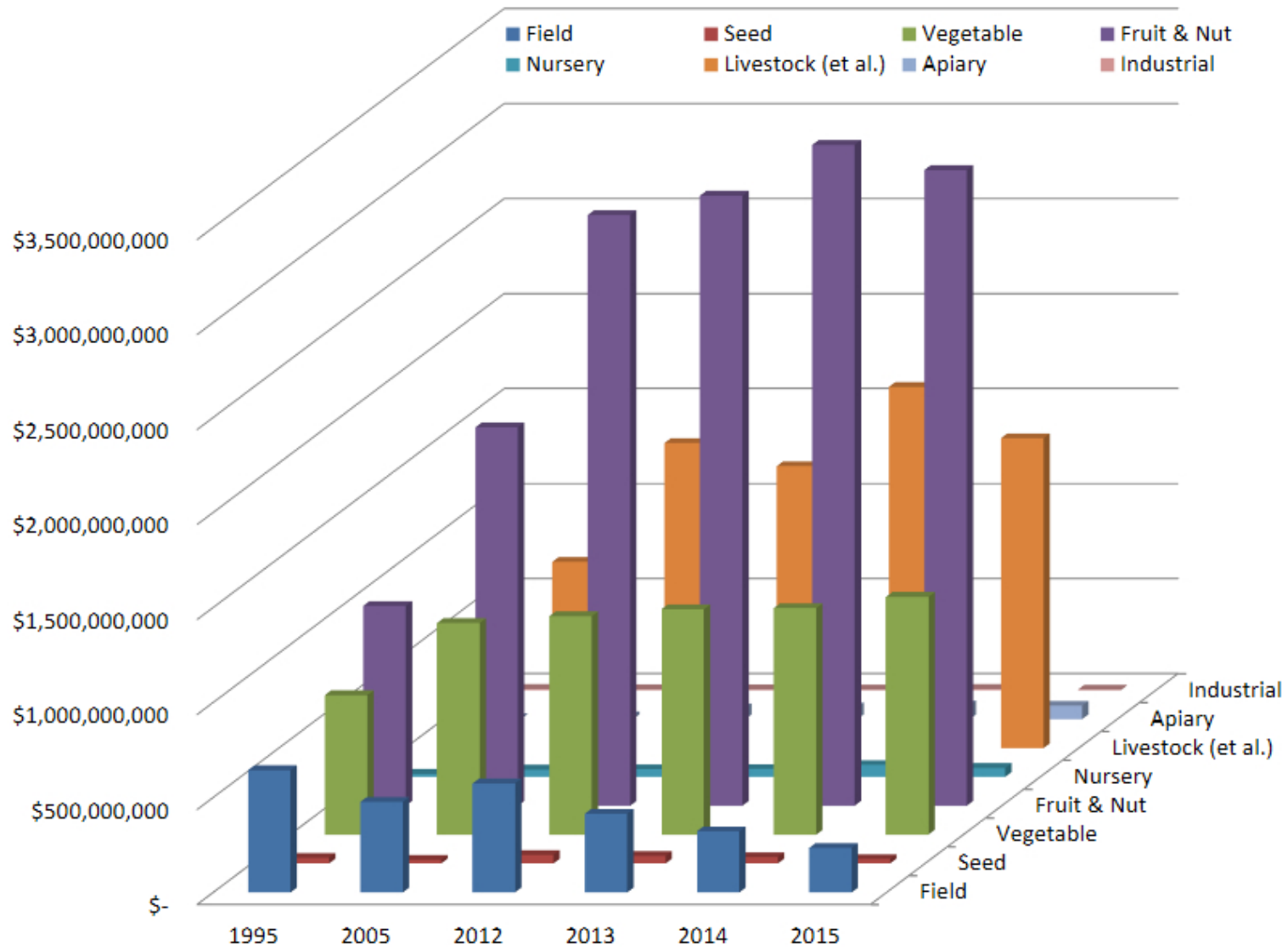
- Amends statutory language of SB 566 in the Health and Safety Code, Food and Agriculture Code.
- Clarifies that industrial hemp is not subject to the same state laws and regulations as cannabis\*.
- Reduces minimum cultivation area to 1/10 acre.
- Assigns primary authority to Dept. of Food and Agriculture (CDFA). \*Bureau of Marijuana Control may regulate hemp grown by cannabis licensees.

# MODERN USES FOR HEMP

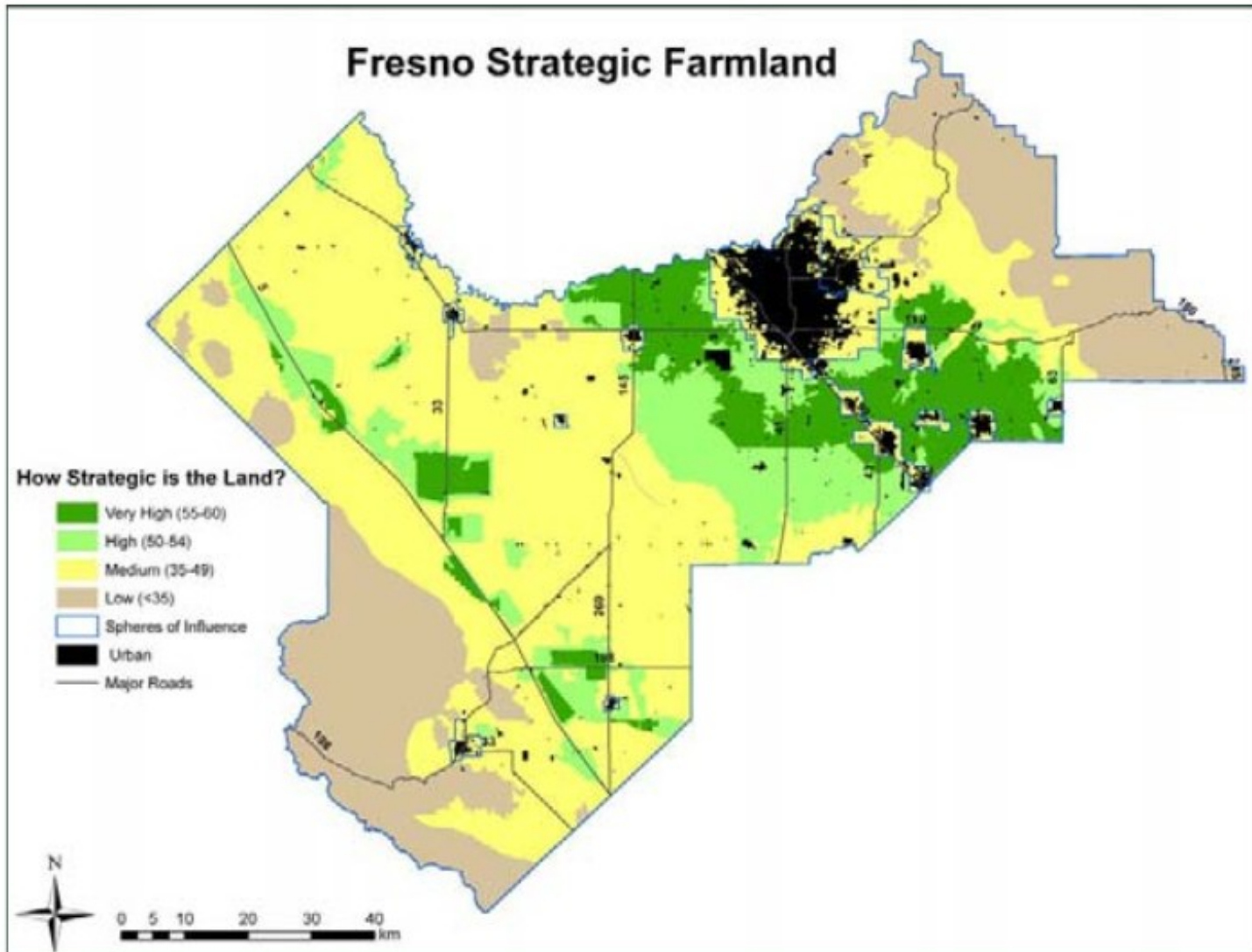


# MODERN USES FOR HEMP





Gross Production Value Comparison, By Year (FCFB, 2016)



Hemp Can Be Grown on Non-Prime Farmlands

## Next Steps

The Industrial Hemp Advisory Board application period closed March 31. No meetings are set yet.

Staff contact is Joshua Kress in CDFA's Nursery, Seed, and Cotton Program at (916) 654-0435.

Send email to subscribe to hemp program listserv:  
[join-cdfa\\_list\\_phpps\\_industrial\\_hemp@lists.cdfa.ca.gov](mailto:join-cdfa_list_phpps_industrial_hemp@lists.cdfa.ca.gov)

Local registration of cultivation sites will be required. Fresno County has not considered industrial hemp cultivation or created a site registration process.

## Next Steps

This slide show, videos and other resources are at

[fresnocannabis.org/conference/hemp](https://fresnocannabis.org/conference/hemp)